



June 2013



### CEO Comment

Martin Wren

*June was a big month for NOVA with Prof Temple Grandin (and me) at the Epping Club and then a couple of weeks overseas practicing my accent and attending the EUSE's Dublin conference.*

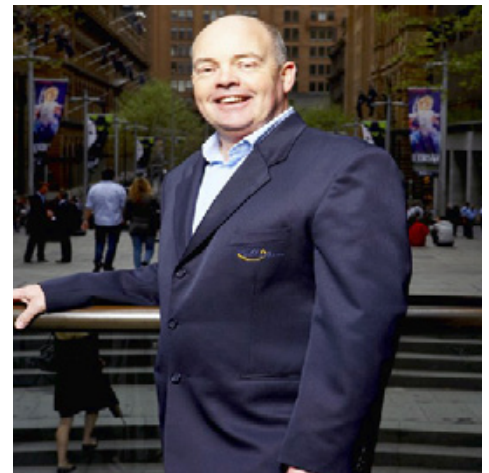
How was it?

Temple Grandin was brilliant! – better than my expectations and my expectations were high! There's a separate report on the seminar in this EZine.

Dublin

An excellent conference and a chance to listen to some Open Employment heavyweights that included Prof's Paul Wehman & Pat Rogan (for whom I hold a crush!).

Our European cousins have some innovative programs and share a belief that everyone should have the right and opportunity to participate in paid employment. It was reassuring to see



that Australian disability employment programs are at least the equal of the majority of their European counterparts.

I came away with a renewed belief in the importance of properly conducting an employment service that caters to the needs of the most disadvantaged jobseekers rather than the largest number of jobseekers.

It is only by ensuring NOVA delivers a person centred approach to services that we can truly carry out our constitution's aims and objectives and truly make a difference in the lives of people with disability.

### NOVA OFFICES

- Camden
- Campbelltown
- Caringbah
- Engadine
- Hurstville
- Ingleburn
- Katoomba
- Penrith
- Richmond
- Rockdale
- Rouse Hill
- Springwood
- St Marys
- Windsor

## Temple Grandin Inspires at the Epping Club

*"The best program I have ever attended", "I have seen her before and she was even better today", "I could listen to you all day long" and so the comments flowed, full of praise for a remarkable woman at a remarkable event.*



"Pathways to Employment" and "Up close & Personal" both hosted by NOVA Employment ran on the 31st of May/1st June and the more than 650 people that attended were treated to an inspirational, informative, emotive and engaging program presented by International and Australian experts in the support of people with Autism Spectrum Disorders.

The program was hosted by NOVA's wonderful Ambassador, Ms Paula Duncan AM who introduced former deputy Prime Minister Tim Fischer. Tim has family experience with autism and he set the stage for the presenters and audience with a mixture of knowledge, warmth and enthusiasm.

Pathways to Employment took the audience on the journey of a person with autism from initial diagnosis to the role of valued employee with each presenter adding to the journey, a path that concluded with a 2 hour address from the programs Keynote speaker, Professor Temple Grandin

This presentation was the highlight and Professor Grandin shared from her own personal path and from the experience she has built through her work, travel and study.



Question time was a highlight for many participants with an opportunity to get advice from the world's most well-known person with autism. Perhaps most valuable were the practical strategies given for specific barriers being faced by parents and individuals amongst the audience.

Prof Grandin was generous with her time and concluded her evening with a marathon book signing and photo opportunity.

"Up close and Personal" saw Australian author and mum, Kathy Lette speak (in a very adult way!) about her own experience as a parent of a person with Asperger's. Kathy received a great reception from the audience including the Hon. Victor Dominello, Member for Ryde and Minister for Citizenship and Communities who also spoke, encouraging the audience to aim high in their pursuit of employment.

The venue was excellent, the food first class, the company terrific and the highlight beyond all else was the brilliant Temple Grandin whose, easy going presentation style, coupled with an unmatched depth of knowledge made our 2 day event the very best.



### Some NOVA links

Watch our latest video on NOVA's Youtube channel



Become a fan of NOVA on Facebook. Recommend us to your friends.



What's news at Can-Do-Ability?



Want some great employment tips?



# Embracing Differences –St Marys TTW

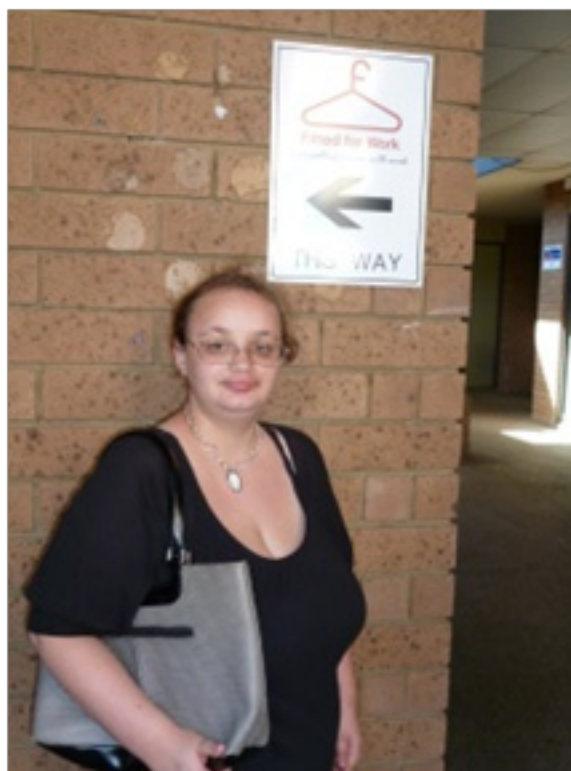
*Part 1- By Sharon Stratton*

*The Trainees at St Marys Outlet are a diverse group of young people and represent the different demographics that reside in and around the local St Marys area.*

Our Trainees are a large group and pride themselves on their teamwork skills and their enthusiasm to develop skills that will make them an asset to their future employers.

At St Marys we are always looking for opportunities to develop employability skills. St Marys Outlet have a dress code that is representative

of what an entry level worker would be required to wear. We have developed skills in maintaining our professional appearance and looking after our “working wardrobe” through training room sessions and the application of a dress code in all TTW sessions.



The dress code not only helps the trainees understand how to correctly dress for employment but reminds the trainees that they are in a professional environment and working towards employment goals.

Many of our Trainees have visited Fitted for Work, a charity that supplies working wardrobes to people starting out in their employment journey. We at the Outlet are also developing our own wardrobe resources (through donations) such as clothing, shoes and relevant cosmetics etc to help our trainees provide the best “first impression” they can.

Head Office  
50 Chapel St  
St Marys NSW 2760  
Ph: 02 9833 2500  
Fax: 02 9833 2499

NOVA.  
EMPLOYMENT

[www.novaemployment.com.au](http://www.novaemployment.com.au)



novaemployment.com.au  
Ph: 02 9833 2500  
Fax: 02 9833 2499



novatraining.com.au  
Ph: 02 9833 2511  
Fax: 02 9833 2499



transition.com.au  
Ph: 02 9833 2500  
Fax: 02 9833 2499



deafjobs.com.au  
Ph: 02 4625 7888  
Fax: 02 4625 5955  
TTY: 02 4625 8395